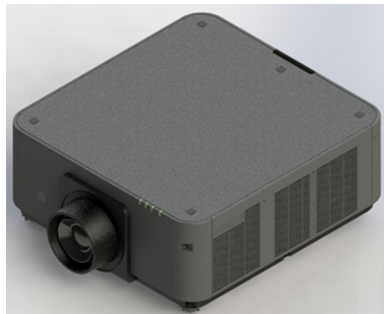


NEC PX602UL

Order Code: 60003795 (BK), 60003695 (WH)

NEC Laser Projector

NEC innovation in light source technology brings to market the new NEC PX602UL, a DLP Laser-Hybrid Installation projector delivering all the benefits associated with the latest laser light source. With no lamp replacement necessary, maintenance is not required and longevity is assured. Achieving an outstanding colour gamut and supreme image detail at high resolutions, laser is the light source of the future.

Addressing the demanding large venue environment, the new NEC PX602UL presents advanced network, multi-media and professional installation features **for superior projection performance within Rental/Staging, Higher Education, Museums, large Corporates and Signage installations.**

BENEFITS

No lamp replacement anymore - up to 20000 h maintenance free operation possible due to Laser Light Source.

Easy installation - selection of wide zoom bayonet lenses, wide vertical and horizontal lens shift and control code emulation guarantees hassle-free installation and replacement of old installation projectors.

Easy way to a big picture - up to 4K interface, HDMI-out signal loop through, built-in signal splitter and edge blending capability enables large presentation pictures without any external devices. PiP function allows additional sources to be displayed.

Perfect Image quality - high brightness, up to 4K input signal and unique picture and colour processing technology based on the latest NEC scaler chip achieves outstanding picture quality.

Rich connectivity - including HDBaseT, the world's first HDMI-out interface, 1xHDMI and DisplayPort technology guarantees outstanding connectivity.

Widest application support - portrait mode projection, 360 degree free tilt installation, unique geometric adjustment and 3D support offers unrivalled installation capability.

Free Download of Multi-Display Management Software - with NaViSet Administrator 2 you can manage all your connected display devices from a centralized location.

IMAGE	Projection Technology	1.7 cm (0.67") DMD Chip - DLP™ Technology
	Native Resolution	1920 x 1200 (WUXGA)
	Contrast Ratio ¹	10000:1
	Brightness ¹	6000 ANSI Lumen, with std. optional lense
	Lamp	Laser Light Source
	Lamp Life [hrs]	20000
	Lens	5 optional bayonet lenses
	Projection Factor	depending on lens selection
	Projection Distance [m]	1.02 – 19.39
	Screen Size (diagonal) [cm] / [inch]	Maximum: 300; Minimum: 50
	Zoom	Motorized
	Focus Adjustment	Motorized
	Supported Resolutions	4096 x 2160 (4k); 2560 x 1600 (WQXGA); 2048 x 1080 (2k); 1920x1200 (WUXGA) - 640x480 (VGA); 1080i/50/60; 1080p/24/25/30/50/60; 720p/60; 720p/50; 576i/50; 576p/50; 480p/60; 480i/50
	Frequency	Horizontal: analog: 15/24-100 kHz, digital: 15/24-153 kHz; Vertical: analog: 48-120 Hz, digital: 24-120 Hz
CONNECTIVITY	RGB (analog)	Input: 1 x 5BNC, shared with Component Signal (YPbPr)
	Digital	Input: 1 x DisplayPort; 1 x HDBaseT; 1 x HDMI™ supporting HDCP Output: 1 x HDMI
	Video	Input: 1 x BNC R Share
	S-Video	Input: 1 x BNC G/B Share
	Control	Input: 1 x D-Sub 9 pin (RS-232), Ethernet
	Video Signals	NTSC; NTSC 4.43; PAL; PAL-M; PAL-N; PAL60; SECAM
REMOTE CONTROL	Input:	1 x 3.5 mm Stereo Mini Jack
	Remote Control	3D Setup; Aspect Ratio; Audio Control; Auto Adjust; DisplayPort; Eco Mode Control; Edge-Blending; Freeze-function; Geometric Correction; HDMI; Help-function; Magnify-function; Multiscreen; Page (up, down); PBP/POP Function; Picture Adjust; Picture Mute; Power (On-Off); Select (up, down, left, right); Source Select; Test Picture
ELECTRICAL	Power Supply	100-240 V AC; 50 - 60 Hz
	Power Consumption [W]	600 Normal Mode
MECHANICAL	Dimensions (W x H x D) [mm]	460 x 176 x 484 (without lens and feet)
	Weight [kg]	19
	Fan Noise [dB (A)]	38
	Colour Versions	Black; White
ERGONOMICS	Safety and Ergonomics	CE; ErP; RoHS; TÜV GS
ADDITIONAL FEATURES	Special Characteristics	4K Interface; AMX Beacon; Built-in Display/Multiscreen Splitter; Cinema Quality Picture (CQP) Processing for best image quality; Crestron RoomView; Digital 3D Reform™; Direct Power-Off Function; Edge Blending Function (Build In); Free Tilt; Full 3D HDMI Support; Geometric Correction; HDBaseT; Keystone Correction (H=±40°, V=±40°); LAN; Manual Wall Color Correction; Multi-Screen compensation mode; NaViSet Administrator 2; OPS module support; Optional User Logo; OSD with 27 languages; Password Security System; PIP/Side by Side, HDMI - Input; P.J LINK; Portrait Setting; RS-232 Control; Stacking Function; Timer-Function; Virtual Remote for direct PC control
GREEN FEATURES	Energy Efficiency	Laser Light Source
	Ecological Materials	100% recyclable packaging; Downloadable manuals
	Ecological Standards	ErP compliant
WARRANTY	Projectors	3 years pan-European service
SHIPPING CONTENT	Shipping Contents	IR Remote Control (RD - 466E); Network Set-up Guide; Power Cord; Projector; Quick Setup Guide; Users Manual on CD-ROM
OPTIONAL ACCESSORIES	Lenses	NPXX (0.75-0.95:1); NPXX (0.95-1.22:1); NPXX (1.22-1.53:1); NPXX (1.52-2.92:1); NPXX (2.9-5.5:1)

¹ Compliance with ISO21118-2005